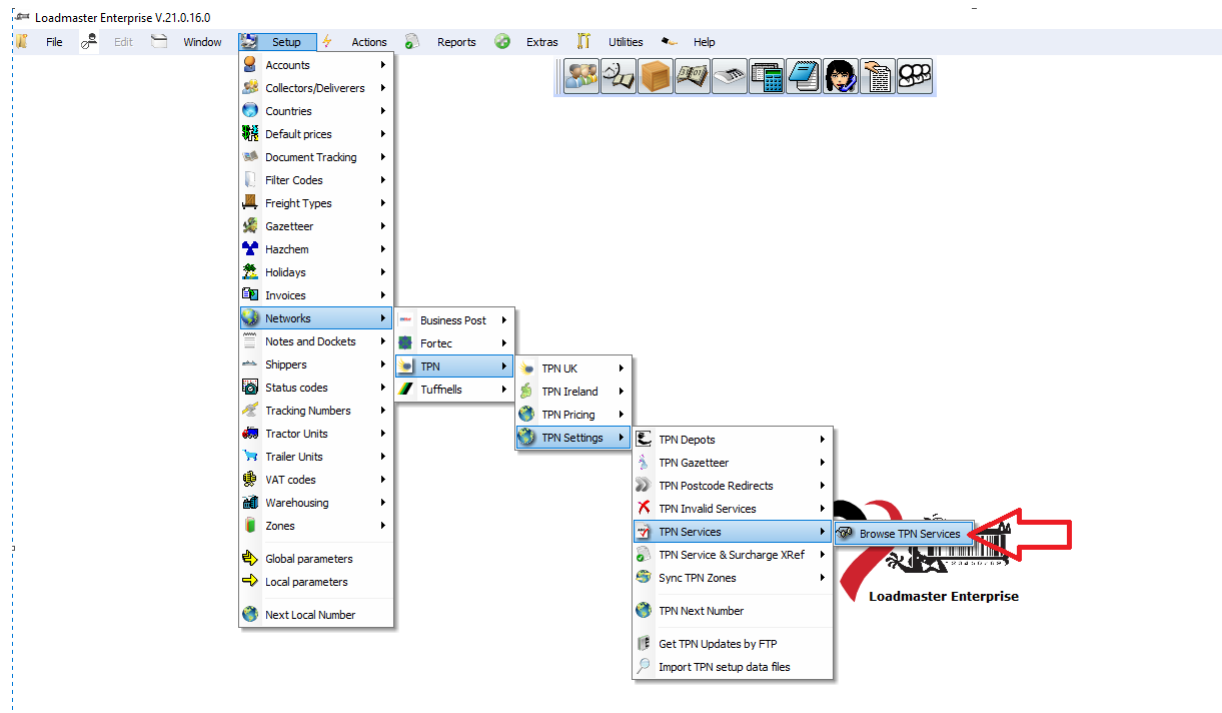




TPN – adding new services

We were recently asked how to add a new TPN service to Loadmaster. As an example of NDHL.

Take this option –



Then add a NEW service –

View TPN Services

Code: NDHL

Description: Home

Type:

☒ Quarter Pallets OK

☒ Half Pallets OK

☒ Half O/S Pallets OK

☒ Full Pallets OK

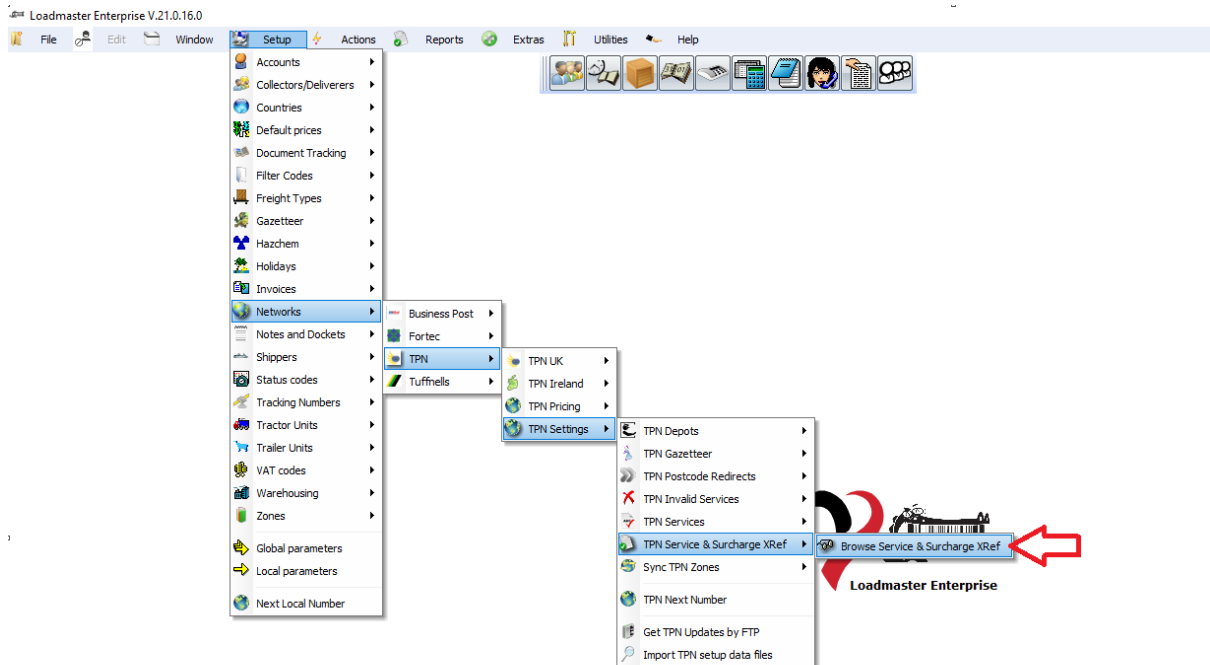
☒ Full O/S Pallets OK

OK

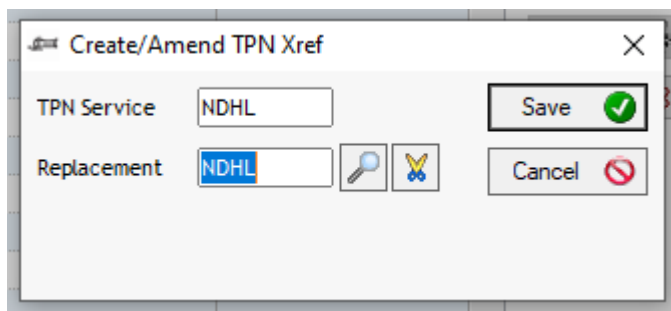
Cancel



You must also add it on this option –



And add –



The Xref allows redirection of one service to another.

So, we could have used ND on the Replacement line for example.

Note that TPN are now allowing the use of quarter pallets on economy services so you may need to check that the Allow Quarter Pallets is ticked on the appropriate service.